

PHONE NUMBERS & HOURS

Local..... 765-473-6668
Toll Free..... 800-844-6668
Fax..... 765-473-8770
E-mail mcremc@mcremc.coop
Web Site..... www.mcremc.coop
Call Before You Dig..... 811
Office hours: 7:30 a.m.-4:30 p.m.
Monday-Friday

CUSTOMER CONTACTS

James Yates
Chief Executive Officer

Robert Schwartz
Director of Operations

Charles Lewis
Director of Office Services

Jody Long
Director of Finance and Accounting

Susan Wagoner
Director of Marketing

TO REPORT AN OUTAGE

- Check circuit breakers or fuses first.
- If possible, check to see if neighbors' lights are also out.
- Phone 765-473-6668 or toll free 800-844-6668 24 hours a day and report the outage. Give the name the service is listed under. If possible, give map location and account number from bill.
- Give us your phone number in case we need to call you back. State the problem, such as loss of power, partial power, dimming or flickering lights.
- Please be patient. Our crews will restore service as quickly as possible.

BOARD OF DIRECTORS

Charles W. Wilson, president
Donald E. Willson, vice president
Paul D. Childers, secretary-treasurer
Mark B. Hahn
D. Marion Hopkins Jr.
Dennis Jim Savage
Fred Warner

Are you a winner this month?

Here on these blue-edged pages, four account numbers are hidden. Find your account number, and call us during office hours by the last working day of the month, and a \$20 credit will appear on a future month's bill. Wondering what your account number is? Check your Miami-Cass REMC bill. It's on there twice. Every month, four members have a chance to win!

CEO COMMENTS

What it takes to be a director

Miami-Cass Rural Electric Membership Corporation (REMC) is a cooperative owned by the people it serves. When the cooperative was founded in 1939, its bylaws established a board of directors and its duties. This board is made up of seven consumer-owners from the cooperative's service territory. Each year, two or three directors, depending on the year, are elected at the cooperative's annual meeting to a new three-year term.

Miami-Cass REMC has now begun the annual board of directors election process. Any REMC member-owner (whose name appears on the membership of record) may seek a position on the board of directors, if the district in which they live is up for election this year.

There are two ways to become a director candidate:

1. Nomination by the nominating committee. These individuals are then placed on a ballot and voted upon during the annual meeting.
2. Nomination by petition. Interested individuals can become director candidates by submitting a petition signed by 15 members. This petition must be submitted to the REMC not less than 15 days prior to the meeting date of Sept. 17. Individuals found to be eligible to serve will have their names added to the ballot and be voted on at the cooperative's annual meeting.

Note: The REMC's bylaws do not allow nominations to be made from the floor at the annual meeting.

Director duties and responsibilities

The job of director of the REMC is very important. As a representative of the entire membership, directors are responsible for the following:



James Yates
Chief Executive Officer

- Establish policies and procedures to guide the cooperative.
- Employ a chief executive officer to oversee the day-to-day operations of the cooperative and evaluate his/her performance.
- Set rate and fee schedules for service.
- Read and be familiar with information and financial reports from the cooperative.
- Approve work plans, establish a budget, and authorize financing for capital improvements.
- Possess the basic computer skills required to send and receive e-mails, open attachments and do

research on the Internet. 218705

- Attend all regular monthly board meetings and occasionally attend state, regional and national conferences and training.

A director is elected to represent a district but is responsible for all decisions affecting the membership as a whole. A director must also possess the self-confidence and communication skills necessary to express his/her opinion in a tactful and constructive manner.

If you would like more information regarding the eligibility requirements for becoming a director candidate, please visit the REMC's website at www.mcremc.coop to download a copy of the cooperative bylaws. You may also contact the REMC office for more information on the director election process by calling 765-473-6668 or 1-800-844-6668.

Districts in which the director's term expires this year are: District 1 and District 4.

District 1: Allen, Erie, Jefferson, Perry, Peru, Richland, and Union townships in Miami County, and Paw Paw Township in Wabash County. Incumbent director — Fred Warner.

District 4: Butler, Clay, Deer Creek, Harrison, Jackson, Pipe Creek, Washington townships in Miami County. Incumbent director — Paul Childers.

Save the date!

Plan to attend your 2011 Annual Meeting.
Saturday, Sept. 17,
Miami County Fairgrounds

We hope to see you there!

Avoid these common building mistakes

I recently attended a conference regarding building science. Building science is the basis for all my recommendations when providing FREE energy audits to our members. One of the speakers was Dr. Joseph Lstiburek (see www.buildingscience.com) who is the leading authority on building homes that will be energy efficient, durable and will not harm you.

Lstiburek talked about 10 things we do when building a home that are wrong from the start. I would like to tell you about three of them. They are vapor barriers on basement insulation, vented crawlspaces, and atmospherically vented gas water heaters.

Vapor barriers on basement insulation is one of the errors in building a home or finishing a basement in an existing home. There are two types of walls in your basement that will get wet, and they are regular walls above the ground and walls below the ground.

There are also two sides of walls — the outside and the inside. Lstiburek recommends walls designed to dry to both sides. However, drying to one side is a very important objective.

Basement walls can not dry to the outside since the ground is wet. This means we must allow the wet basement walls to dry to the inside. Many finished basements have a sheet of plastic wrapping the inside wall. This is a bad practice, because we must allow our walls to dry to the inside during the wet season. Plastic is a vapor barrier which will prevent the wall from drying.

One way to correctly finish an inside basement wall is to install extruded polystyrene foam board for insulation, attach furring strips to create an air pocket, and then attach your drywall. You will then have a wall that will be able to dry when it becomes wet, and you will have a more durable and healthier basement.

Vented crawlspaces are common in our area. Many builders mistakenly believe you must have them to meet building codes, but



Kim Burton
Energy Advisor

they are not required in Indiana. Vented crawlspaces can become moist enough to grow mushrooms.

Crawlspace temperatures are usually a degree or two above the ground's temperature. During most of the summer, this temperature is well below the dew point outside.

Ventilating crawlspaces allows this moist outside air to condense on the cool crawlspace surfaces. Therefore venting a crawlspace in the summer to allow it to dry is actually making it wet rather than drying it. It is like

opening a basement window on a hot, humid day in the summer. It will make the walls sweat. Wet walls become moldy walls very quickly.

A crawlspace is like a mini basement. So when building a home or improving a home, it needs to be treated the same as a basement. You would not build a basement with big holes in it, so why would you want to do that to a crawlspace.

Just like the basement, you need to make it part of the home's conditioned air. We will then heat it in the winter and cool it in the summer, giving you a healthier home with lower energy costs. To bring your crawlspace into conditioned air space, you do not insulate the floors, but you do insulate the crawlspace walls. You must also install plastic (6 mil black) as continuous ground cover to keep out moisture. Eliminating the vents, insulating the walls, and properly installing a ground vapor barrier will prevent your floors from becoming moldy and will prevent them from rotting due to moisture from the outside.

Another error in your home is having a gas water heater that is atmospherically exhausted (has a draft hood). If you must have a gas water heater (we recommend electric in place of LP water heaters), then it needs to be a direct-vent water heater which directly exhausts and pulls in the combustion air from the outside.



A draft-vented water heater is dangerous.

If your home has crawlspace vents or gas appliances that are not direct vented, I would strongly recommend a FREE energy audit.

In your home you have many appliances which are exhausting air outside. Some of these appliances are clothes dryers, range hoods, and bathroom exhaust fans. An open fire in a fireplace also pulls as much as 500 cfm (cubic feet per minute) of air from your home. This exhausted air must be replaced by outside air, and, in many cases, it is coming down the vent pipe for your water heater. If this occurs, you have a backdraft — and when your water heater is on, it is sending toxic gases into your breathing air.

All gas furnaces and water heaters should be vented directly to the outside and have a dedicated supply of combustion air from the outside.

All of the material for this article was referenced from an article on Lstiburek's website: www.buildingscience.com. The article includes all 10 of the top blunders in building a home, and I think you will find it very interesting. 196404

If your home has crawlspace vents or gas appliances that are not direct vented, I strongly recommend a FREE energy audit. We will be able to inspect and test your home and determine how to make your home's air cleaner while making your home more durable and also reducing your energy use. Please contact me at 765-473-6668 or e-mail me at kimb@mcremc.coop to schedule the free home energy inspection.



Vented crawlspaces are a great pathway for summer humidity to condense on your floors.



Right: Vapor barriers, like this plastic sheeting, trap moisture which causes mold.

REMC awards scholarships

Miami-Cass REMC has selected six area high school graduates from households served by the REMC to receive scholarships to further their education.

With the costs of higher education continuing to rise, we are excited about the opportunity to help our members reach their academic goals. The funds for the scholarships are generated from the long distance telephone service the REMC offers.

Those who participate in the long distance service program not only save money on their long distance phone bills but are also able to put money right back into the community through this scholarship program.

Six scholarships worth \$500 each went to:

- North Miami High School graduate **Adam Moore**. He is the son of Gary and Sherri Moore. He plans to study biology/pre-medicine at Indiana University in Bloomington.

- North Miami High School graduate **Melinda Hattery**. She is the daughter of Troy and Janie Hattery. She plans to study equine training and instruction at Saint Mary-of-the-Woods College in Saint Mary-of-the-Woods.

- Maconaquah High School graduate **Carlee Glassburn**. She is the daughter of Gary and Michelle Glassburn. She plans to study agricultural communications and policy at Ivy Tech Community College in Kokomo. She will transfer to Purdue University after two years.



- Maconaquah High School graduate **Andrew Morgan**. He is the son of Eric and Denise Morgan. He plans to study ag equipment/diesel technology at the University of Northwestern Ohio.

- Lewis Cass High School graduate **Taylor Zartman**. She is the daughter of Marcus and Tammy Zartman. She plans to study art history and communications at DePauw University in Greencastle.

- Lewis Cass High School graduate **Zachary Carbaugh**. He is the son of Paul and Kathy Carbaugh. He plans to study youth ministry and church leadership at Johnson University in Knoxville, Tenn.

Congratulations to all the recipients. Each of the winners will be recognized at the REMC's Member Appreciation Day on Sept. 17.

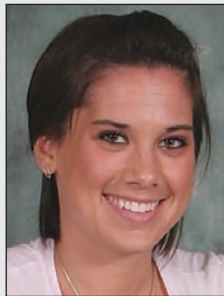
2011 Miami-Cass REMC scholarship winners



Adam Moore
North Miami
High School



Melinda Hattery
North Miami
High School



Carlee Glassburn
Maconaquah
High School



Andrew Morgan
Maconaquah
High School



Taylor Zartman
Lewis Cass
High School



Zachary Carbaugh
Lewis Cass
High School

BOARD UPDATE

Your board of directors at work: Results of the April meeting

1. Counted seven board members present.
2. April 2011 WVPA board and annual meeting reports were presented by Fred Warner and Jim Savage.
3. April 2011 Indiana Statewide Association board report was presented by Marion Hopkins.
4. CEO report was presented by Jim Yates.
5. Minutes of the previous board meeting were approved.
6. March monthly operating, marketing and safety reports were reviewed and approved.
7. The January 2011 directors' monthly summary and the February 2011 budget were reviewed and approved.
8. Reviewed WVPA's 2010 wholesale power tracker (WPT) adjustment change. The board elected not to make any further changes to the current member WPT for the balance of this year.
9. Discussed proposed Board Policy No. 737, Employee Confidential and Proprietary Information. Policy No. 737 was adopted as presented.
10. Discussed proposed Board Policy No. 218, Director Confidential and Proprietary Information. Policy No. 218 was adopted as presented. 427900
11. Set the next board meeting for Tuesday, May 31, at 7:30 p.m.

Local county fair dates



Miami County
June 20-25

Cass County
July 11-16

Co-ops score high in satisfaction survey

According to data released by the American Consumer Satisfaction Index (ACSI), electric cooperative consumer members are significantly more satisfied with their co-op energy provider than consumers who receive power from either investor-owned or municipal-owned utilities.

In a year when consumer satisfaction overall dropped to a two-year low, electric cooperatives received an average satisfaction score of 82, eight points higher than the median score for investor-owned utilities (74) and nine points higher than the median score for munis (73).

2011 is the first year the well-regarded ACSI included cooperative electric utilities as a separate category. The survey included a random sampling of co-op consumer members from across the country.

The average score for electric cooperatives topped that of FirstEnergy, the top-scoring investor-owned electric utility (78), and matched the score of Salt River Project, the top-scoring municipal (82).

"These scores validate the unique co-op business model," said NRECA CEO Glenn English. "Owned by the people they serve, cooperatives put affordable electric bills above profits and dividends. At heart, electric co-ops are local consumer advocacy organizations."

The 723 Touchstone Energy Cooperatives scored higher than any other utility sector with an ACSI score of 83. 419401

Our marching orders: Affordable power

by Marion Hopkins

After a visit to Washington, D.C., last month, I was impressed by the long-range planning and precision of our nation's military. But no matter how prepared it might be, the military can't make a move without marching orders from the top.

It reminds me of the bind electric cooperatives are in right now. We excel at long-range planning — most of the power you use today was designed three or four decades ago. We stand at the ready with plans for new infrastructure, power plants, and innovative technologies to provide electricity for the next 30 years. But there's a problem — we're waiting on marching orders from our nation's leaders.

We have told our elected officials that now more than ever we have to plan for a safe, reliable, and affordable energy future. To get there, we need to know the rules for power generation — and we need to know now. Rolling blackouts in Texas earlier this year reminded all of us electricity must be used as quickly as it's produced; we don't have the technology yet to store large amounts of power to fall back on when resources like wind turbines don't work.

For our children's and grandchildren's sake, we need to make some tough decisions soon — and we need to get them right.

With a flurry of proposed regulations being discussed for power plants (and more to

come), the U.S. Environmental Protection Agency (EPA) has been following its own set of marching orders and deadlines set by the courts. However, what the final regulations will look like remains unclear.

Co-ops need to know the rules — our marching orders — for power generation. Until the government provides more certainty, we can't enact our plans for the next three decades. As our appetite for electricity grows and threatens to outstrip our nation's generation capacity, we need to build more power plants. But what type of facilities should they be to make the most sense financially?

Miami-Cass REMC's mission was set by you, our members, 72 years ago. You charged us to provide safe, reliable, and affordable power. Where this power comes from impacts a sizable portion of your electric bill — 70 percent of each dollar you pay us goes to buying wholesale power. Bucket trucks, poles and wire, right-of-way trimming, payroll, and other operating expenses are covered by the rest.

Although expensive, power plants and expanded transmission systems are an investment in a better future for all of us. We'll keep our ultimate mission at the forefront of our efforts as we work with Congress to get our marching orders and keep the lights on for the next 30 years. It's one more way we're looking out for you.

Marion Hopkins sits on the board of directors of Miami-Cass REMC.

Joe Wyant joins the Miami-Cass REMC family

On April 11, Joe Wyant joined the Miami-Cass REMC team as an accounting specialist. Prior to coming to the REMC, Wyant worked as a bank teller at AmericanTrust Federal Savings Bank. He is a December 2009 graduate of Indiana University Kokomo where he majored in business with an emphasis in finance and economics.

His primary role at Miami-Cass REMC will be job costing, financial bookkeeping and processing work orders.

He enjoys working outdoors gardening and farming with his family. He also enjoys hunting,



Joe Wyant

fishing and camping, and he is an active member of McGrawsville United Methodist Church.

Wyant is still actively in the process of learning and understanding all the process of his new position. When asked what he enjoys most about working at the co-op, he said he really enjoys being able to utilize his degree.

All of the employees and board members of Miami-Cass REMC are glad to have Wyant on their team and

wish to congratulate him on his new position.



**Happy Father's Day
from all of us at
Miami-Cass REMC!**



A Touchstone Energy® Cooperative

